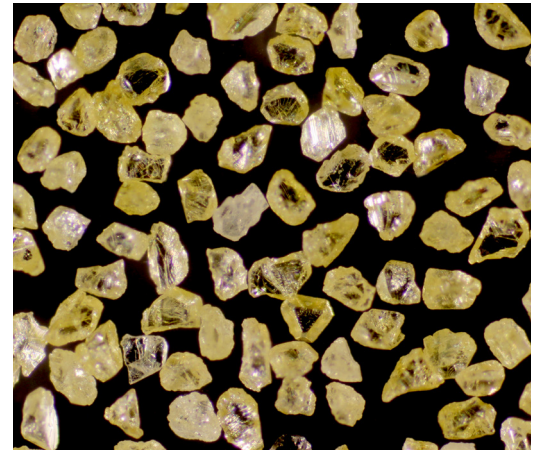
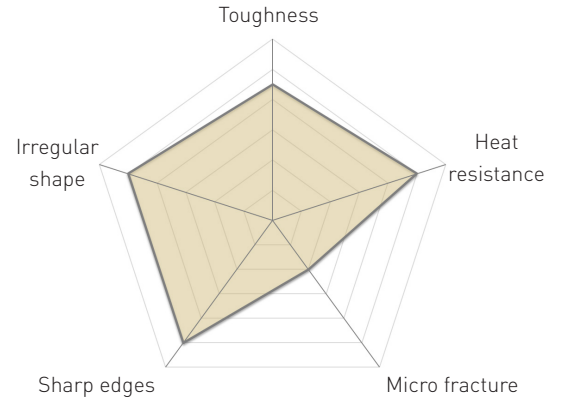
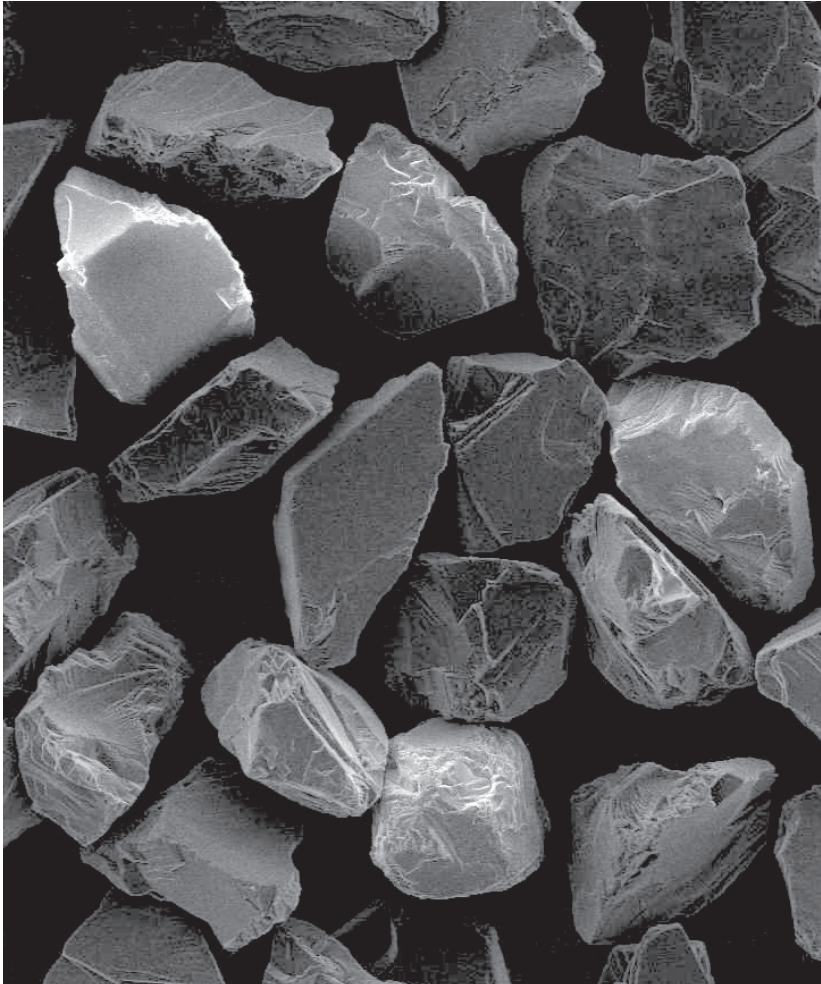


FRD-A is a heavy-duty resin bond grit with sharp and irregularly-shaped mono-crystalline particles with excellent self-sharpening characteristics. It is suitable for tungsten carbide, PCD and PCBN grinding, for intermittent cut, as well as for stone polishing and glass grinding, particularly with metal bonded wheels.



Properties

- ▶ low friability
- ▶ macrofracture
- ▶ very irregular particle shape
- ▶ good heat resistance

Applications

- ▶ OD, tool and creep feed grinding
- ▶ PCB/PCBN, tungsten carbides, glass
- ▶ interrupted grinding

Bonds

- ▶ resin
- ▶ polyimide
- ▶ vitrified
- ▶ metal
- ▶ electroplated

Size Availability

● Available ○ On request

Product	density(g/cm ³)	60/80 D252	80/100 D181	100/120 D151	120/140 D126	140/170 D107	170/200 D91	200/230 D76	230/270 D64	270/325 D54	325/400 D46	400/500 D39
FRD-A	3.52	●	●	●	●	●	●	●	●	●	●	●
FRD-A N56	5.12	○	○	○	○	○	○	○	○	○	○	○